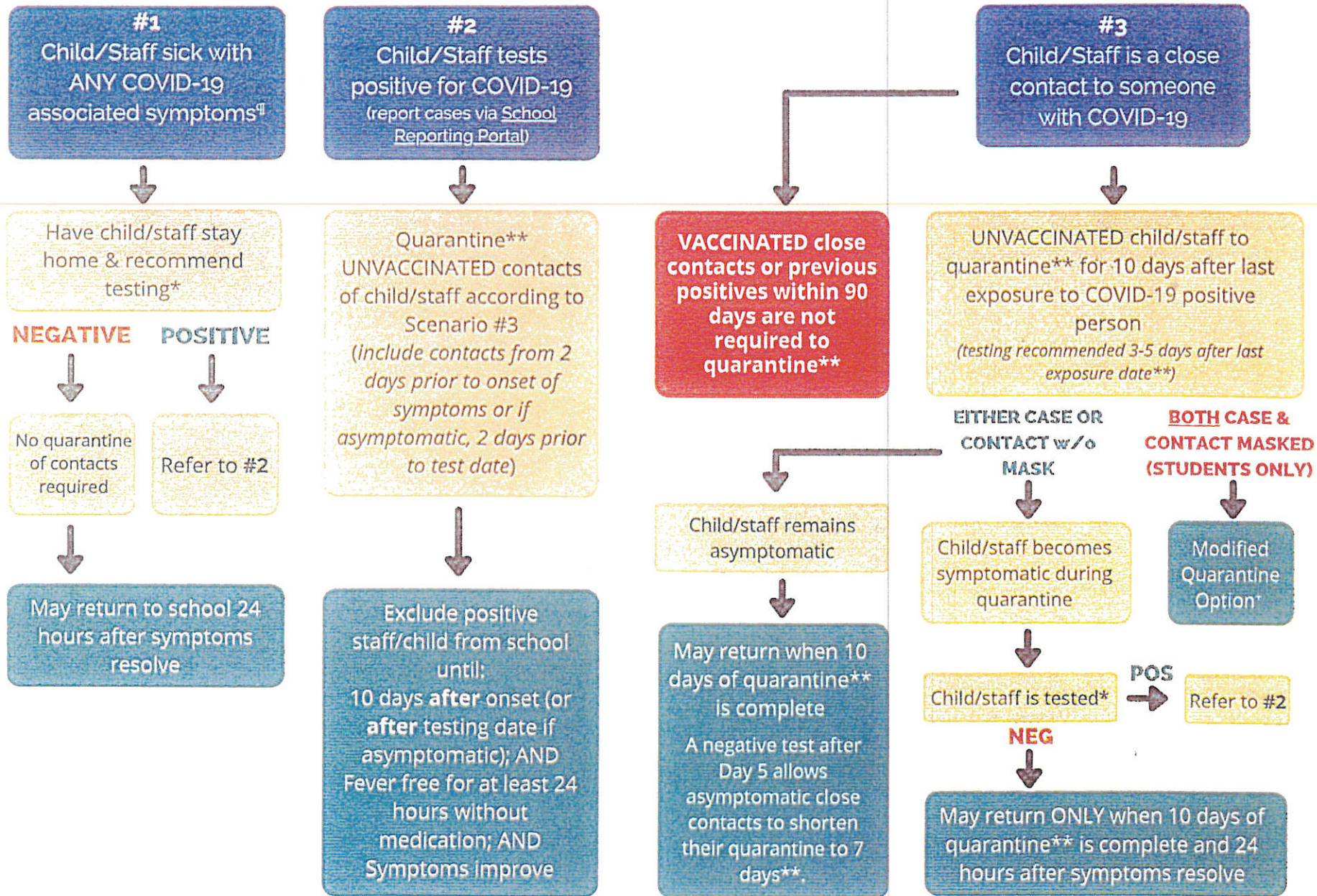


Fremont Community Schools - COVID-19 Flowchart



Fremont Community Schools - COVID-19 Flowchart

Please note:

Day of last exposure = day 0

Day onset of symptoms = day 0

Day of test (if asymptomatic) = day 0

School Screening Symptoms

Fever, chills, cough, shortness of breath, loss of taste or smell, or any other COVID related symptoms.

*Those who are symptomatic and choose not to be tested must follow guidelines as if they were positive, as stated in #2. In these cases, testing is strongly encouraged.

**Who Needs to Quarantine: People who have been in close contact with someone who has COVID-19 must quarantine - excluding fully-vaccinated individuals and people who have had COVID-19 within the past 3 months.

- People who have been in close contact with someone who has COVID-19 are not required to quarantine if they have been fully vaccinated against the disease and show no symptoms. However, it is recommended that they test 3-5 days after exposure and wear a mask in public indoor settings for 14 days.
- People who have tested positive for COVID-19 within the past 3 months and recovered do not need to quarantine or get tested again as long as they do not develop symptoms.
- People who develop symptoms within 3 months of their first bout of COVID-19 may need to be tested again if there is no other cause identified for their symptoms.
- Source: <https://www.cdc.gov/coronavirus/2019-ncov/if-you-are-sick/quarantine.html>